

FREE POSTER:
VIKINGS

9 ASTOUNDING
TREES

THE WORLD'S
DEEPEST CAVE?

NATIONAL GEOGRAPHIC

VIKINGS

What You Don't Know About the
Toughest Warriors Ever

MARCH 2017

HOW THE ANIMAL KINGDOM USES TOOLS

TECHNOLOGY REVEALS ANCIENT TEXTS

STARTALK JAMS ON THE SCIENCE OF JAZZ

CONTENTS

MARCH 2017 • VOL. 231 • NO. 3 • OFFICIAL JOURNAL OF THE NATIONAL GEOGRAPHIC SOCIETY

DEPARTMENTS

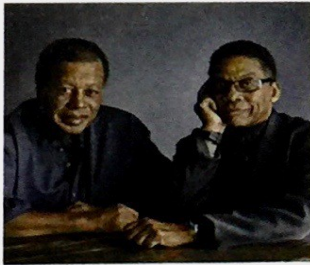
VISIONS

EXPLORE

Kite-skiing on ice, animal tools, a ship elevator, and a monastery's hidden texts

STARTALK

Jazzmen Herbie Hancock and Wayne Shorter jam with Neil deGrasse Tyson.

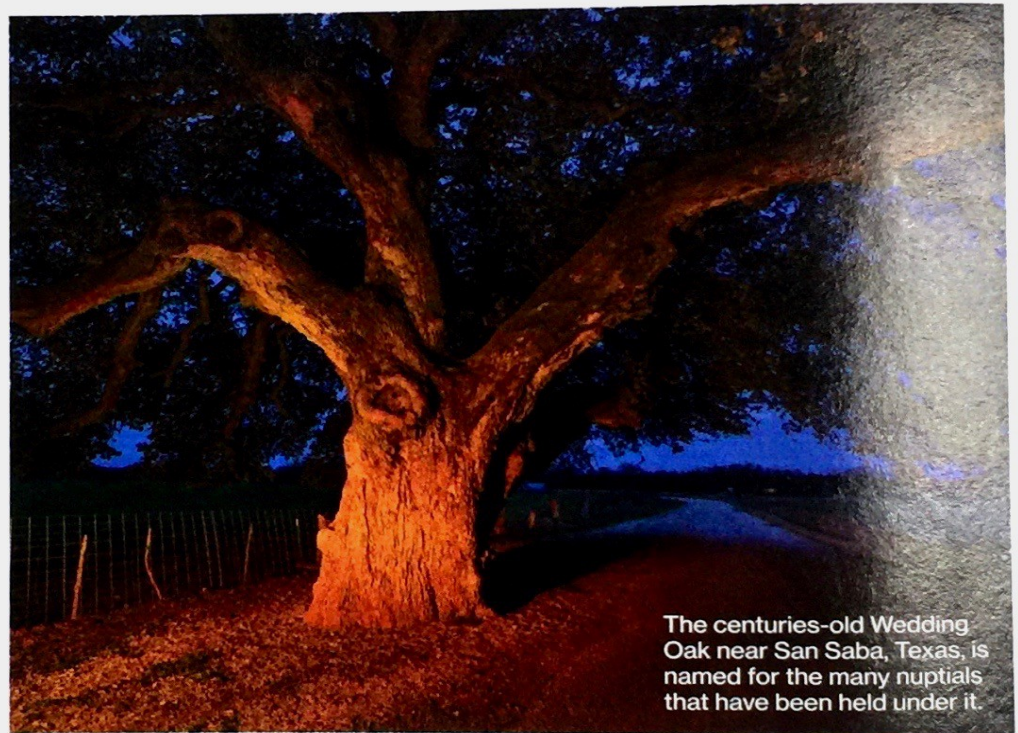


FEATURES

52 | THE WISDOM OF TREES

Every tree tells a story. Some are beyond eloquent: the apple tree that illustrated the law of gravity, the pear tree that survived 9/11, pines that can live more than 5,000 years.

By Cathy Newman Photographs by Diane Cook and Len Jenschel



The centuries-old Wedding Oak near San Saba, Texas, is named for the many nuptials that have been held under it.

SPECIAL POSTER: THE VIKINGS' FAR- FLUNG REALM AND FEARSOME FLEET

On the Cover A Scandinavian warrior chief from the late 10th century is ready for battle. The headgear he wears is based on the only complete Viking metal helmet known to survive.
Art by Fernando G. Baptista

Corrections and Clarifications
Go to natgeo.com/corrections.

30 | NEW VISIONS OF THE VIKINGS

How Scandinavian farmers became Europe's scourge.
By Heather Pringle
Photographs by Robert Clark
and David Guttenfelder

74 | A SEA'S FADING BOUNTY

Politics and exploitation put a great fishery at risk.
By Rachael Bale
Photographs by
Adam Dean

86 | A FIGHT TO SURVIVE

Crested black macaques have many enemies.
By Jennifer S. Holland
Photographs by
Stefano Unterthiner

104 | DARK STAR: INTO THE DEEP

An expedition plumbs the depths of what may be the Everest of the underground.
By Mark Synnott
Photographs by Robbie Shone

120 | METROPOLIS

The world's megacities are a swirl of 21st-century energy and humanity.
Story and Photographs by
Martin Roemers

ELSEWHERE

TELEVISION

TAKE A JOURNEY THROUGH HUMANITY'S ORIGINS

Humanity has progressed thanks to a sequence of quantum leaps, including the discovery of fire, the dawn of communication, and the first stirrings of war. National Geographic's new series *ORIGINS* delves into these and other advances Mondays at 9/8c, starting March 6.

TELEVISION

THE LANDMARK SERIES EXPLORER IS BACK

Long a popular documentary series, Explorer returns with magazine storytelling, celebrity guests, and conversation, hosted by Richard Bacon. Mondays at 10/9c on National Geographic.

STOP-MOTION VIDEO

JOIN THE VOYAGES OF A VIKING SHIPBUILDER

In a video adventure rooted in Norse mythology and fashioned entirely of handmade paper art, a Viking master builder constructs a ship, then pilots it on raids to take loot and slaves. See it at ngm.com/Mar2017.



360-DEGREE VIDEO

EXPERIENCE A BATTLE WITH VIKING WARRIORS

Armed with swords and axes, armor-clad reenactors at a Viking festival in Wolin, Poland, launch an offensive against the Slavs – and you can be part of it. Find our immersive 360° film at natgeo.com/vikings360.

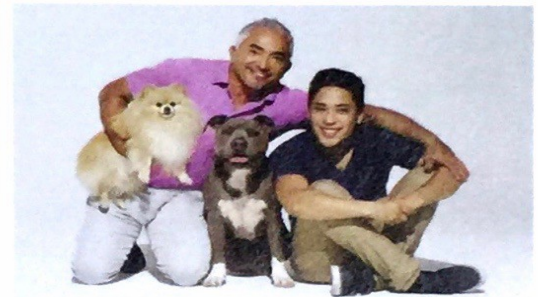
Subscriptions For subscriptions or changes of address, contact Customer Service at ngmservice.com or call 1-800-647-5463. Outside the U.S. or Canada call +1-813-979-6845. We occasionally make our subscriber names available to companies whose products or services might be of interest to you. If you prefer not to be included, you may request that your name be removed from promotion lists by calling 1-800-NGS-LINE (647-5463). To prevent your name from being available to all direct mail companies, contact: Mail Preferences Service, c/o Direct Marketing Association, P.O. Box 9008, Farmingdale, NY 11735-9008.

NATIONAL GEOGRAPHIC (ISSN 0027-9358) PUBLISHED MONTHLY BY NATIONAL GEOGRAPHIC PARTNERS, LLC, 1145 17TH ST. NW, WASHINGTON, DC 20036. ONE YEAR MEMBERSHIP \$39.00 U.S. DELIVERY, \$44.00 TO CANADA, \$51.00 TO INTERNATIONAL ADDRESSES. SINGLE ISSUE: \$7.00 U.S. DELIVERY, \$10.00 CANADA, \$15.00 INTERNATIONAL. (ALL PRICES IN U.S. FUNDS; INCLUDES SHIPPING AND HANDLING.) PERIODICALS POSTAGE PAID AT WASHINGTON, DC, AND ADDITIONAL MAILING OFFICES. POSTMASTER, SEND ADDRESS CHANGES TO NATIONAL GEOGRAPHIC, P.O. BOX 62130, TAMPA, FL 33662. IN CANADA, AGREEMENT NUMBER 40063649, RETURN UNDELIVERABLE ADDRESSES TO NATIONAL GEOGRAPHIC, P.O. BOX 4412, STN. A, TORONTO, ONTARIO M5W 3W2. UNITED KINGDOM NEWSSTAND PRICE £5.99. REPR. EN FRANCE: EMD FRANCE SA, BP 1029, 59011 LILLE CEDEX, TEL. 320.300.302; CPPAP 0715U89037; DIRECTEUR PUBLICATION: D. TASSINARI DIR. RESP. ITALY: RAPP. IMD SRL, VIA G. DA VELATE 11, 20162 MILANO, AUT. TRIB. MI 258 26/5/84 POSTE ITALIANE SPA; SPED. ABB. POST. DL 353/2003 (CONV. L. 27/02/2004 N. 46) ART. 1 C. 1 DCB MILANO STAMPA QUAD/GRAPHICS, MARTINSBURG, WV 25401. MEMBERS: IF THE POSTAL SERVICE ALERTS US THAT YOUR MAGAZINE IS UNDELIVERABLE, WE HAVE NO FURTHER OBLIGATION UNLESS WE RECEIVE A CORRECTED ADDRESS WITHIN TWO YEARS.

TELEVISION

CESAR HITS THE ROAD...

In *Cesar Millan's Dog Nation* the dog behavior expert and his son Andre tour the United States helping owners and pets. The series debuts March 3 at 9/8c on Nat Geo WILD.



BOOKS

...AND OFFERS CANINE 'LESSONS'

In *Cesar Millan's Lessons From the Pack: Stories of the Dogs Who Changed My Life*, the Dog Whisperer shares life lessons he's learned from dogs. Available at shopng.com and wherever books are sold.

NAT GEO WILD YOUTUBE CHANNEL

SEE NEW WILDLIFE VIDEOS

Nat Geo WILD looks at surprising animals found in our own backyards in a new digital series, *Untamed With Filipe DeAndrade*, airing on YouTube March 14.

TELEVISION

THE BIG CATS KEEP ON COMING

Our annual Big Cat Week kicks off February 20 on Nat Geo WILD.