

A beautiful home starts with you

THE PHILIPPINES' NO. 1 HOME MAGAZINE • JUNE 2018 • P250

# myhome

INCORPORATING **CondoLiving**

## PINOY PRIDE

THE BEST OF FILIPINO DESIGN



**PLUS**

**NATIVE PRIDE:** Homegrown brands you should know about  
**DECO CENTRAL:** The ultimate design destination in Pampanga  
**HERITAGE HOMES:** Stunning spaces full of Filipino style  
**COFFEE, SIDE, AND CENTER:** Tables we love and adore  
**WOODEN WONDERS:** Furniture and accessories in our favorite material

**LOCO  
OVER  
LOCAL**

**90**

statement pieces  
for your home



smile

COMPLETE  
YOUR HOME

SMHOME

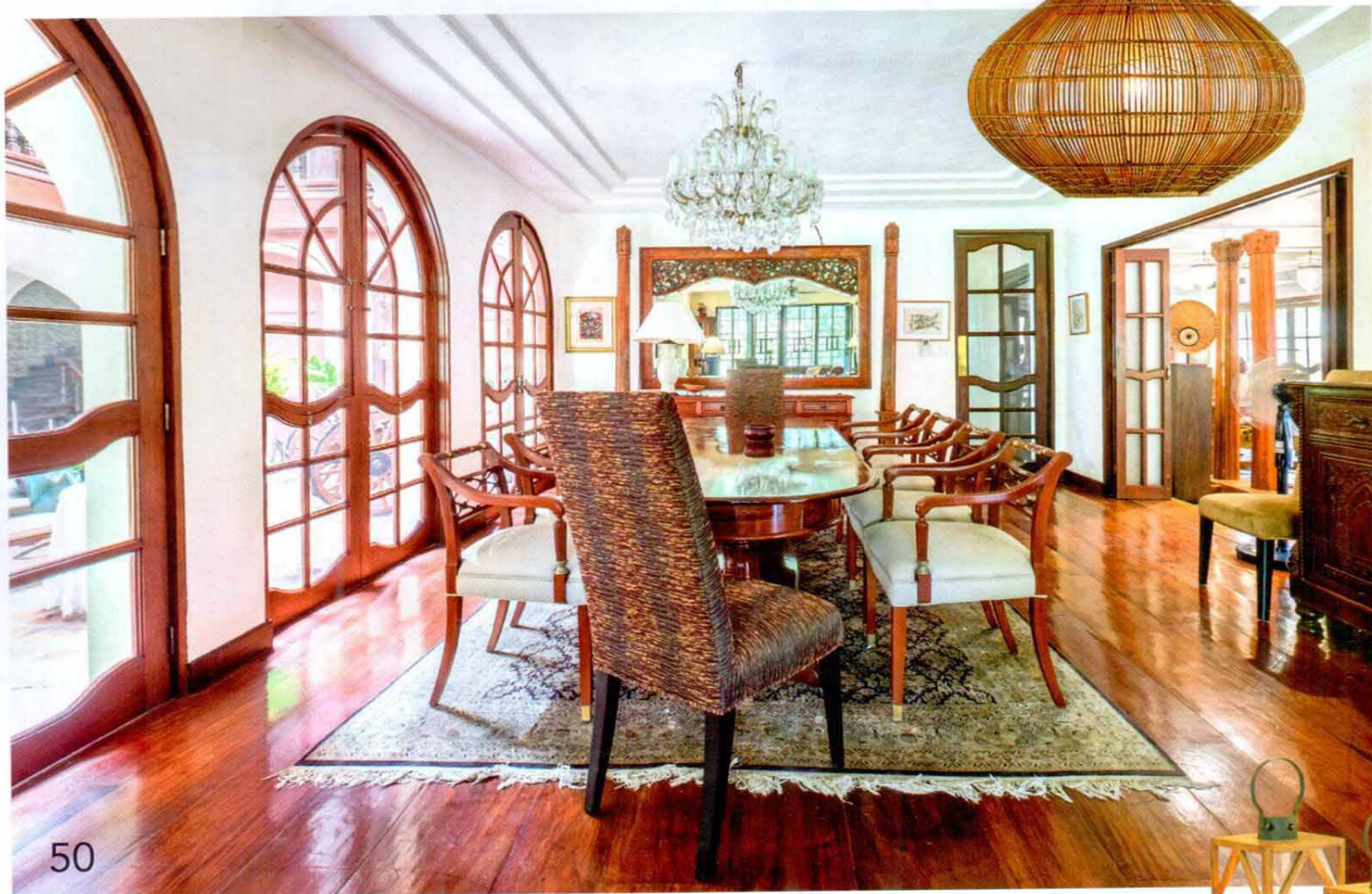
LIVE  
LAUGH  
LOVE

dwell in  
possibility.

—Emily Dickinson

# June 2018

36



50



42

## REGULARS

- 4 MASTHEAD
- 6 EDITOR'S NOTE

## WHAT'S NEW

- 8 Find out what the latest news and products are

## COLOR CRUSH

- 14 WOOD AND GOOD  
Add some warmth to your space with these versatile wood pieces

## INSTAGRAM STORES

- 16 #CUSTOMCORNER  
Get accessories and furniture tailored to your home's design with this month's Instagram store picks

## DESIGNER PROFILE

- 20 ERIC PARAS  
Translating his love for the Old World to new Filipino-inspired furniture



24

## CREATIVE SPACE

- 22 SHUFFLE MAKERSPACE  
Shimmy and shuffle your business in this outstanding space

## STYLE GUIDE

- 24 LOCAL TAKEOVER  
Bring the best of Filipino design into your home

## SPECIAL FEATURE

- 32 THE PRIDE OF PAMPANGA  
Furniture makers from up North find a place to showcase their talents
- 36 A LOOK AT LOCAL CRAFTSMANSHIP  
Local artistry is best exemplified by our great craft makers in the metro and beyond

## HOMES

- 42 DELIGHTFULLY DOWNSIZED  
There are no deadlines when it comes to dream homes
- 50 LIVING THE FILIPINO DREAM  
The right design changes made this house a dream home
- 58 THE PERFECT BACHELOR'S PAD  
A young professional turns a pre-owned unit into his own party pad
- 64 MID-CENTURY MASTERED  
Mid-century and tropical elements meet in this spacious Alabang home

## GARDENS

- 70 INSIDE OUT  
An inner elegance reflected as landscape

## CondoLiving

### That's So Me PINOY STAPLES

- 78 Jeep  
79 Taho  
80 Sorbetes cart

## Convo

- 81 CLOSING TIME  
CondoLiving signs off from the newsstands

## Hacks

- 82 WOOD TO KNOW  
Wood options to make your living space unique

## Special Feature

- 83 INNOVATING TRADITIONS  
Reinventions that showcase Filipino creativity
- 84 HERITAGE PRESERVED  
A beautiful work in progress

## Neighbors

- 86 THE APARTMENT  
Alero Design Studio creates a uniquely Filipino family space
- 92 POSH GETAWAY  
An extremely luxurious unit up for rental
- 96 CLASS ACT  
A sophisticated suite for a newly married couple in Cebu
- 100 TIMELY WONDER  
Interior designer Rock Robins completes a renovation in three weeks

- 104 BEACH PLEASE  
A tropical escape up for rent in BGC

## Agenda

- 108 COMMUNE AND COFFEE PROJECT  
The stories behind the newest hotspots in the metro
- 109 CASTAWAY  
The Island is our new favorite chill spot

## ENTERTAINING

- 110 LOCAL FLAVORS  
Make brunch more festive with homegrown flair
- 112 PINOY LUXE  
Make local more modern with metallic accents

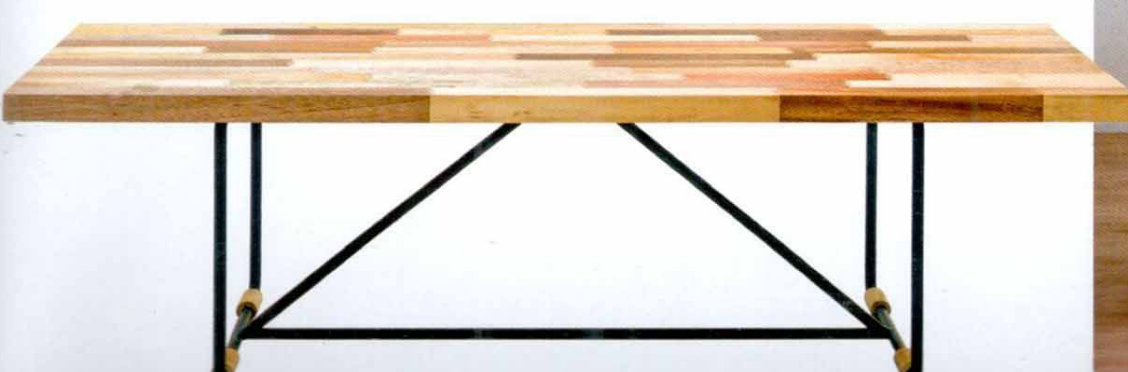
## SPOTLIGHT

### RESTAURANT

- 114 Totally Baked Café  
116 Kermit Manila

### EVENTS

### 120 DIRECTORY



WHAT'S NEW

# New, Now, Next

*The latest news and products to watch out for*



Smell Chic's variety of body care and home care products come in cute packaging, making it a perfect gift choice for your chic friends or loved ones

## SMELL CHIC

Home and body care product supplier Smell Chic recently opened its newest branch located at SM City North EDSA. Known for its line of scented hand sanitizers and linen and room sprays, Smell Chic also offers body washes, lotions, massage oils, and diffusers perfect for personal use or as gifts to loved ones. The brand's signature Reed Diffusers are available in lavender, fresh bamboo, green tea, or olive variants. As their products are a favorite giveaway for both large and small-scale events, all products of Smell Chic can be customized for any occasion, with different packages available upon request. Get your Smell Chic products from their retail labs at Glorietta 3 and Powerplant Mall in Makati, or visit [www.smellchic.com](http://www.smellchic.com) for more details.



## ROBINSONS HOME LIVING X ITO KISH

Robinsons Department Store recently launched "Curated Home", a line of products in collaboration with furniture and interior designer Ito Kish. Categorized into three collections, Curated Home features fanciful plates, scented candles, and planters that are perfect for any type of space. The Resort collection takes its cue from stoneware, basketry, and ironwork, with patterned furniture pieces and accessories that are easy to combine with different design styles. The Oceana collection takes inspiration from the calming hues of the ocean, with vases, pillows, and bath items that look great in modern spaces. "Mixing and matching pieces from the different collections allow you to create your own personal, unique space," says Ito. Curated Home is available at all Robinsons Department Store branches nationwide starting June 29. Follow @RobinsonsHomeLiving for more information



Liven up spaces with the latest products from the Curated Home collection



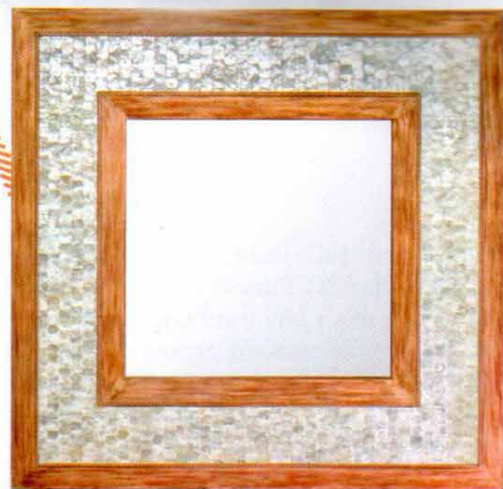
Keep trinkets in a cool but classy container. Wooden box with hippo accents (price upon request), from Pacific Traders

# Wood & Good

Add some warmth to your space with these versatile options

Written by HAZEL SANTOS | Photographed by WILLIAM ONG

Aside from being lightweight and strong, wood is also water-resistant and durable, making it the preferred building material for many homeowners and designers. Its properties make wood an ideal choice for the home, as well. Available in a multitude of color options and finishes, wood furniture in different styles and material combinations are sure to give your space elegance and class. 🏠



Add shimmer and warmth to a bare wall. Capiz and wood mirror (price upon request), from Pacific Traders

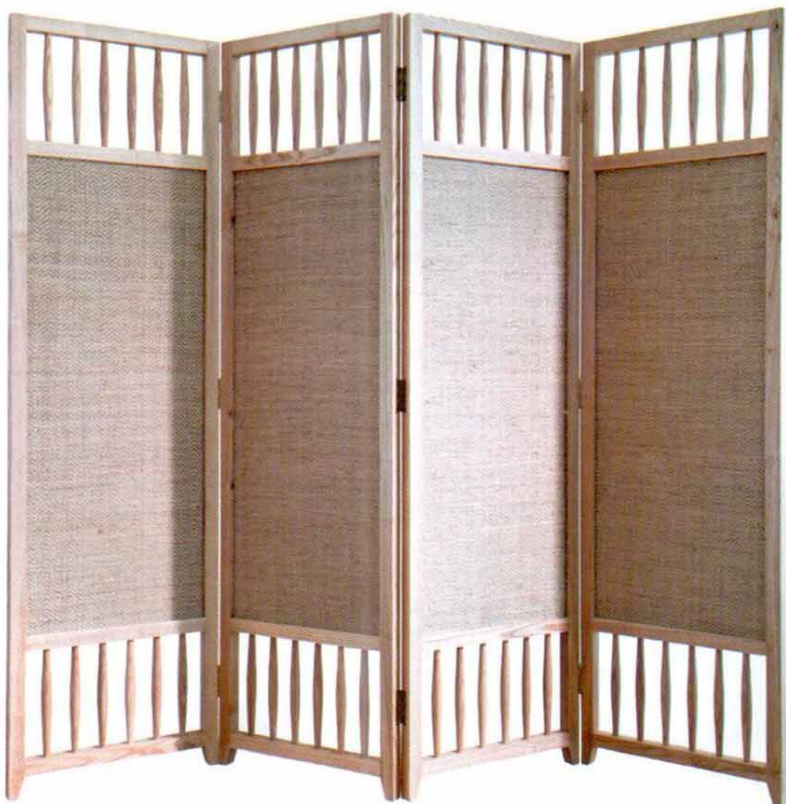


Go Scandinavian cool with marble framed by light-colored wood. Davian coffee table (P44,000), from Origins



Light up your space with a monochromatic option. Sol floor lamp (P31,473), from Triboa Bay

Separate spaces with a stylish piece. Valencia divider in ash wood (P41,950), from Philux



Turned legs in a darker finish are always timeless. Adeline ottoman (P12,800), from A. Garcia



# #CustomCorner

Get accessories and furniture tailored to your home's design with this month's Instagram store picks

Written by GEL G. GALANG



**@casadev** • Follow  
Casa de V

Everything began with founder Valerie Teves's passion for chic, budget-friendly, and functional designs for the Filipino home. Her hobby of curating furniture and décor started in 2013 when Valerie was doing this for her newly-built home in Manila. "I found that most of the items are not readily available in the market," she says. This was Casa de V's humble start, with Valerie personally selecting each piece carefully, and stocking a variety of products from baby items and souvenirs to everything home and living. Casa de V's pieces are usually sourced during her travels to the U.S., Singapore, Dubai, and Japan, among others. This isn't the end all for Casa de V, however, because Valerie is looking at expanding the business. "Actually the plan this year to go in the direction of offering more personalized pieces, including engraved items and exclusive handmade local products," says Valerie. "Hopefully, we will see it through this year."

#curated #travels   

**@urbanfarmph** • Follow  
Urban Farm PH

For those who have a black thumb, succulents are the next best thing to have for greener indoors. This is a sentiment that Urban Farm PH founder and fellow black thumb Jore Conol had when she began her Instagram store. "Someone challenged me to take care of a cactus. I was supposed to just get one but I ended up getting 20," she says. "That was the first day I got introduced to succulents." Urban Farm's goal is to provide people with Instagram-worthy, no-filter plants that are just as easy to care for. But more importantly, wherever they go, be it bazaar or plant meet-up, Urban Farm is bent on showing customers and plant enthusiasts the right way of caring for plants. "I encourage them to ask questions when they see their plants unhappy or share when they're looking gorgeous," says Jore. If you want to add more beautiful potted bouquets to your mini garden or dip your toe in the world of plant life, Urban Farm is the best place to start.

#succulents #greenthumb   



# Homes

*Our spaces this month showcase the best of Filipino design. While many may feel local style isn't their cup of tea, even the humblest woven basket or simplest wooden furniture can make spaces fresh and modern with the right styling. Consider proudly Pinoy-made pieces, go to design fairs, and check out local brands to find out what's best for you and your home.*







The Vipp trash bins' design has barely been touched over the last 80 years. The brand, however, has evolved so much from its roots, to offering tables in prefab houses. Just like them, CondoLiving is also evolving into something new

**“W**e cannot become what we want to be by remaining what we are,” said Max Depree, former CEO of Herman Miller.

Print is one of the pillars of traditional media. It is interesting that a sheet of paper with words can guide you with what to do with your condo, and even your life. However, as pages and ink are replaced by phones and pixels, it is only apt that we evolve with it.

Thousands of pages and countless printed copies later, here we are, the last print issue of CondoLiving.

On behalf of the rest of the team that created, updated, and cherished CondoLiving, we thank you for your support and love. To the architects and interior designers who shared their knowledge to us, the condo dwellers who let us in their units, to every contributor we have worked with, the stores who helped us craft the ideal condo lifestyle, and to the readers who have loved the magazine as much as we have, thank you from every square meter of our hearts.

But as the cliché goes, this is not goodbye. It is time we transfer to a new home, specifically on your laptops and mobile devices. After all, the only way up is to evolve. We'll still be

around through our website [condoliving.onemega.com](http://condoliving.onemega.com). While we have stopped laying out stories and rushing to send the magazine to the printers, we will be delivering the same great content you enjoyed on print through our website and social media accounts. It is bittersweet to bid farewell to our original home but exciting to move to our new one. We have so much in store and we can't wait to share them with you.

The medium might have changed but the essence of CondoLiving stays the same. We are your ultimate guide to the sky-high lifestyle, be it entertaining inside your small unit or living it big outside. Remember, your condo is your personal corner in the world so make it count. Make it beautiful, make it work for your lifestyle, and make it you.

Team CondoLiving, signing-off from the newsstands and logging in online. 🌐

CONVO

# Closing Time

We're moving to a new home

Produced by PATRICIA HERBOLARIO | Photo courtesy of VIPP

# Wood to Know

Wood options to make your living space unique

Written by JANINAH H. BAUTISTA

**W**ood is a natural material known for its strength and durability. It's a great choice not only for construction, but for furniture and accessories, as well. Filipino homes are often characterized by the use of wooden pieces that are done in a variety of styles and finishes. Familiarize yourself with options available in the market to help you choose what's best for your home. **CL**

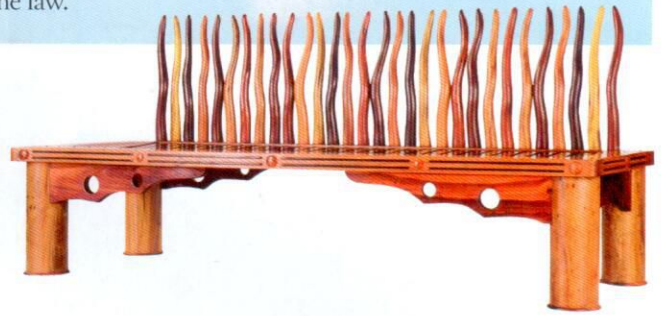


## KAMAGONG

One of the most beautiful types of wood, *kamagong* is known for its color that ranges from dark brown to a deep black. It is known for its hardness and resistance to impact, and is one of the rarest and most expensive woods locally because of its commercial unavailability. This is due to the fact that the *kamagong* is an endangered tree species and is protected by Philippine law.

## YAKAL

*Shorea astylosa* or *yakal* reaches heights of about 25-30m when mature, and is commonly found in low altitude forests in Quezon, Camarines, Zamboanga, and Davao. This type of wood is mostly used for construction because of its strength and ability to withstand pressure or damage.

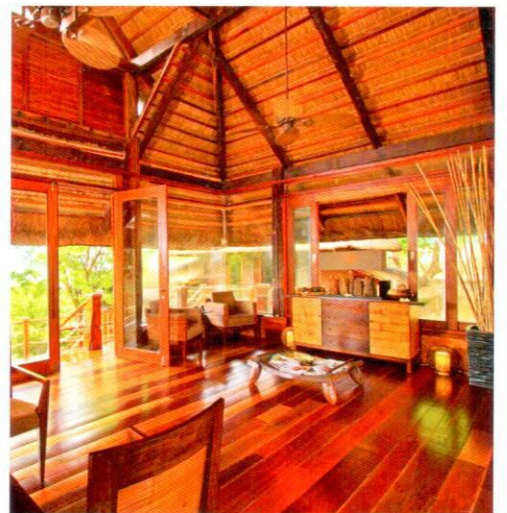


## TANGUILE

Although not considered as real mahogany because of its wavy grain and coarse texture, *Shorea polysperma* or *tanguile* is popularly known as Philippine mahogany. It has a beautiful, reddish sheen that stands out when used on doors, cabinetry, and furniture pieces.

## NARRA

Considered our national tree, *narra* is known for its sturdiness and resistance to termites and decay. While it is often yellowish to purplish in color, it can be stained in a variety of finishes for use in furniture and accessories, and as a finishing material for interiors.



## MOLAVE

*Molave* or *tugas*, is valued for its strong and durable yet finely textured wood. Mature trees can reach a height of 15m, but they have become increasingly rare due to overharvesting and excessive logging. Like the *kamagong*, the *molave* is also on the list of endangered trees.



# Innovating Traditions

Reinventions that preserve Filipino culture

Produced by JANINA H. BAUTISTA



## Siklesa

A modern-day kalesa that showcases Pinoy creativity

Photos courtesy of SIKLESA

Unveiled at the recent Manila FAME 2018 is an innovative vehicle that reinvents the age-old mode of Filipino transportation. Siklesa, a modern-day mix of *kalesa* and tricycle, pays homage to Filipino design heritage. The concept is a brainchild of Lorenzo Vega and architect Jaime Recto, both aspire to create a revolutionary riding experience for Filipinos in the future. "We wanted to create a vehicle that would have this sort of magical and regal experience—something that would make the journey just as wonderful as the destination," shares Lorenzo.

Jaime took inspiration from the weaving cultures, concepts, and values of Filipinos in designing Siklesa. "Aesthetically and functionally, it had to be reminiscent of the sophistication of a traditional Spanish-Filipino *kalesa*, but combined with the efficiencies of modern-day travel priorities," Jaime shares. The body of Siklesa features subtle curves, natural wood panels, and polished stainless steel trim. Inside, it boasts of spacious seating for six people, a high ceiling, and a 360-degree panoramic riding experience for its users.

"We would love for the Siklesa to be deeply ingrained in the Philippines as a public utility vehicle and symbol, one that is as widespread and deeply associated with our country as the tricycle or the jeepney. We want to pay respect to our past while pushing things forward at the same time," they share. Siklesa is now commercially available for both purchase and rental, and interested parties may customize their Siklesa according to their own specifications. For more info, visit [siklesa.ph](http://siklesa.ph) or email [info@siklesa.com](mailto:info@siklesa.com). ☎



## Kambal Pandesal

Filipino breakfast favorites with a twist

Photographed by MIGUEL ABESAMIS OF STUDIO 100

Unlike the regular neighborhood Kambal Pandesal franchises, Kambal Pandesal Bakery + Cafe is a 90sqm restaurant that reinvents the Filipino staple *pan de sal*.

Owned by restaurateurs Josephine Villalon and Necy Juat in partnership with San Miguel Corporation, Kambal Pandesal Bakery + Cafe intends to bring in *pan de sal* to exclusive or commercial areas. "We're not like the regular coffee shops out there because of our *pan de sal*. It's typically not found in commercial places or restaurants, but it is something all Filipinos look for. *Kinalakihan na ng mga tao 'yang pan de sal at pan de coco. Hahanap-hanapin talaga nila 'yan. Lahat ng Pinoy, ang usual breakfast ay pan de sal,'* shares Necy.

With the intention of innovation, Kambal Pandesal Bakery + Cafe offers a wide variety of *pan de sal* with different fillings. They serve *pan de sal de queso*, *pan de kape pan de sal* (which is good even on its own), *pan de sal malunggay* which is healthy and medicinal, and other favorites like *pan de espanya* (Spanish bread) and *pan de coco*.

The spacious interiors of the bakery + cafe were crafted by architects JC Gopez and Rocky Costes, who turned the place into an industrial type of coffee shop softened by subtle yellow walls and an indoor vertical garden. Visit Kambal Pandesal Bakery + Cafe located at G/F Industria at Circulo Verde, Calle Industria, Libis, Quezon City. ☎





**OPPOSITE PAGE:** "We incorporated a lot of artwork spaces because they have a lot and they have a good collection," shares Jesy. A new addition to the family collection is a triptyc by Rick Hernandez, it is showcased in the living room. While it was intended to be displayed horizontally, it was hung apart for aesthetic purposes

**LEFT:** The dining room is given a pop of personality through the Schema dining table and chairs. Its backdrop is a great view of the living room and kitchen

**S**ome families are blessed to have a family compound where everyone can be together yet have their own privacy in their own homes. However, growing with the times, some families are now living inside "family condos." For this family clan in the construction business, they made the most out of their family lot where they had a building constructed to house both their office and living space. The building was designed by Architect Jaemi Cruz of Alero Design Studio.

On the top-most levels of the building are the family's units, all designed by the same design firm. Each sibling has their own unit, all of which will also be designed by the same design team. While some might think that this is a dream project, it isn't. "It's hard because they want all their spaces to look different! If someone has this chair or finish, you can't use it again in any other unit," shares interior decorator Jesy Cruz of Alero Design Studio. "Because each client is different, you want each of them to look great, it feels like you're in a competition with yourself," he adds, pertaining to the experience of designing the units. The design duo have their hands full with five more units waiting to be dressed.

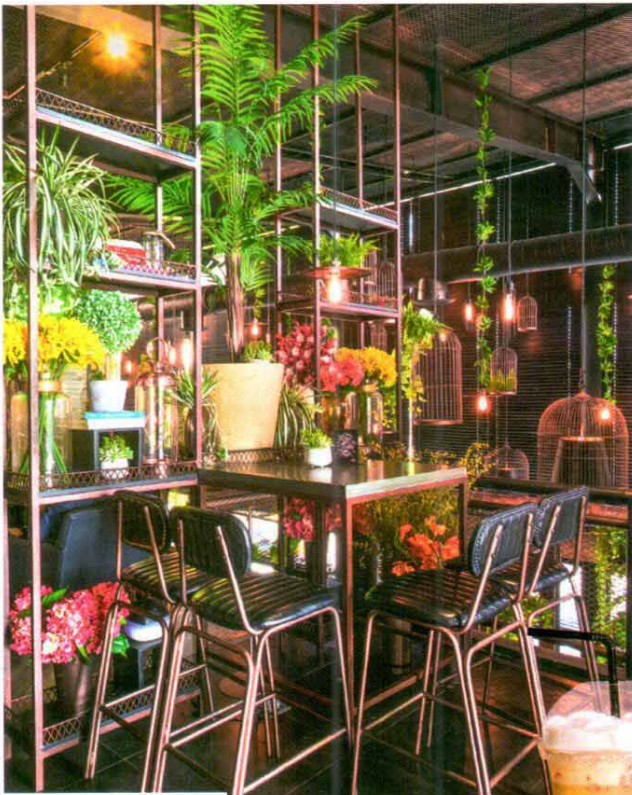
Luckily, one has already been finished—artworks in place and bedsheets fitted. This 150-square meter unit is the halfway home for Lida and her two boys. Lida's brief to the design duo was simple, she wanted something more flexible in terms of design. Her old home was done in a Mediterranean style. And while it was lovely for some

NEIGHBORS

# The Apartment

Alero Design Studio creates a uniquely Filipino family space

Written by PATRICIA HERBOLARIO | Photographed by GREG MAYO



Coffee Project displays an ambient and homey setup with its indoor greeneries that soften its rustic interiors. Right: Sausage and Garlic Pasta (P225) and Vietnamese Coffee Jelly Frappe (P180)

## Coffee Project

The story behind 25 branches and counting

Written by Janina H. Bautista

Photographed by Floyd Jhocson of Studio 100

Art Directed by Reann Erilla

The first branch of Coffee Project started out as a regular cafe in Alabang where businessman and former senator Manny Villar could hold his meetings over cups of good coffee. When the possibility to expand the business came to his attention, he decided to grow the business. Three years later, Coffee Project has become the fastest-growing local coffee shop in the industry, with over 25 branches around the metro.

According to marketing officer Von Villanueva, the main selling point of the coffee shop is its rustic yet enchanting interior setup. "We try to bank on the Instagrammable aesthetics of the coffee shop. What we want is for the customers to feel at home and comfortable during their stay. We're very work-friendly. You can stay here the whole day to work or study," says Von. The garden-inspired interiors of its branches are crafted by the in-house designers of Villar's company called AllValue.

Coffee Project uses 100% Arabica coffee beans for their coffee selections, which are also available for purchase in store. Breakfast meals and pastas are served all day alongside their pastry selections. ☑

Stalk them: @coffeeprojectofficial

## Commune

Singapore home and lifestyle brand is finally in Manila!

Written by Patricia Herbolario

Photos courtesy of Commune

A Singapore-based brand, Commune is your next favorite home and lifestyle brand. Established in 2011, they carry artisanal wooden furniture and accessories for the home. Their designs are modern pieces that combine form and function with timeless appeal.

Unlike Western brands and because they come from one of the most vertical cities in the world, Commune's furniture pieces are perfect for condos. The styles of the pieces are very Scandinavian and Mid-Century. "We believe our furniture represents the changing tastes of younger generations and wish to introduce a homemaking lifestyle that is ethical, sustainable, yet trendy and chic," said Gan Shee Wen, Sales and Marketing Director of Commune.

Furniture aside, the store itself is a 360-degree experience of the brand, from sight to smell. By engaging your five senses, they hope to resonate powerfully with the heart of homemaking - emotion. ☑

Where: 6/F East Wing, Shangri-La Plaza Mall, Mandaluyong City

Stalk them: @communehome\_ph



After buying a couch or a chair, you can also get a cup of coffee from their coffeeshop that's operated by Drip Cafe Philippines. Below: Aside from the beautifully crafted furniture displayed in-store, they also have a free rendering service so you can imagine your space with their pieces!

